



Water Hardness in Arizona

Hard water is water that has a high content of dissolved minerals, primarily calcium and magnesium. In the southwest, low rainfall, hot weather, and high mineral content in the soil contributes to Arizona's hard water. The white, chalky film that you may find on the faucets or shower doors in your home is evidence of hard water. While hard water is not a health concern, it can be a nuisance. Here are some helpful tips for dealing with hard water:



- ▶ Run a cup of white vinegar through the coffee maker and the dishwasher rinse cycle every few months.
- ▶ Use a rinse aid in your dishwasher.
- ▶ Soak showerheads and faucet aerators in white vinegar to loosen deposits.
- ▶ Spray fixtures with lemon juice and wipe with a soft cloth.
- ▶ Regularly flush your water heater.
- ▶ Consult manufacturer recommendations for dishwashers, clothes washers, and coffee makers for use with hard water.

To learn more about your water quality, please visit www.libertyutilities.com for the Annual Water Quality Report.

Signs for the Right Amount of Water for Plants



WATCH OUT FOR OVERWATERING!

Signs of overwatering your plants:

- ▶ Leaves turn a lighter shade of green or yellow
- ▶ Young shoots are wilted
- ▶ Growth is excessive
- ▶ Algae and/or mushrooms are on or around plants



WATCH OUT FOR UNDERWATERING!

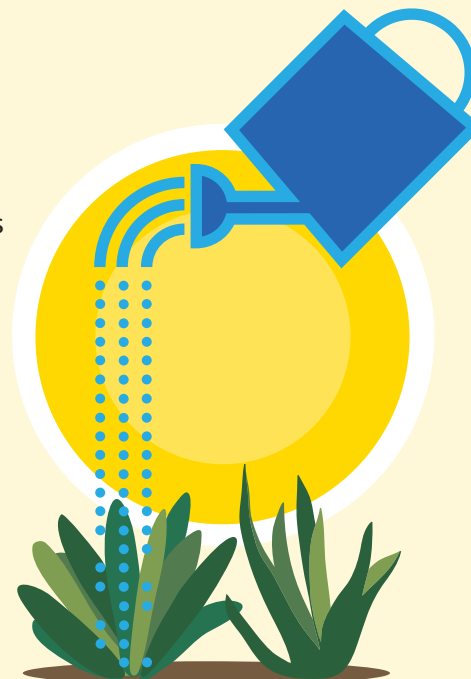
Signs of underwatering your plants:

- ▶ Older leaves turn yellow or brown
- ▶ Leaves are dull, wilted, or dropping
- ▶ Leaves curl
- ▶ Stems or branches die back



SIGNS OF UNDERWATERING YOUR TURF:

- ▶ Bermuda turns blue gray
- ▶ Grass doesn't spring back after being stepped on
- ▶ It's difficult to push a screw driver into the soil





Liberty Utilities
Arizona
Twitter:
@LibertyUtil_AZ

Avondale, AZ 85392

Surcharges, surcredits
and local, state and
regulatory charges.

