



## Water Hardness in Arizona

Hard water is water that has a high content of dissolved minerals, primarily calcium and magnesium. In the southwest, low rainfall, hot weather, and high mineral content in the soil contributes to Arizona's hard water. The white, chalky film that you may find on the faucets or shower doors in your home is evidence of hard water. While hard water is not a health concern, it can be a nuisance. Here are some helpful tips for dealing with hard water:



- ▶ Run a cup of white vinegar through the coffee maker and the dishwasher rinse cycle every few months.
- ▶ Use a rinse aid in your dishwasher.
- ▶ Soak showerheads and faucet aerators in white vinegar to loosen deposits.
- ▶ Spray fixtures with lemon juice and wipe with a soft cloth.
- ▶ Regularly flush your water heater.
- ▶ Consult manufacturer recommendations for dishwashers, clothes washers, and coffee makers for use with hard water.

To learn more about your water quality, please visit [www.libertyutilities.com](http://www.libertyutilities.com) for the Annual Water Quality Report.

## Signs for the Right Amount of Water for Plants



### WATCH OUT FOR OVERWATERING!

*Signs of overwatering your plants:*

- ▶ Leaves turn a lighter shade of green or yellow
- ▶ Young shoots are wilted
- ▶ Growth is excessive
- ▶ Algae and/or mushrooms are on or around plants



### WATCH OUT FOR UNDERWATERING!

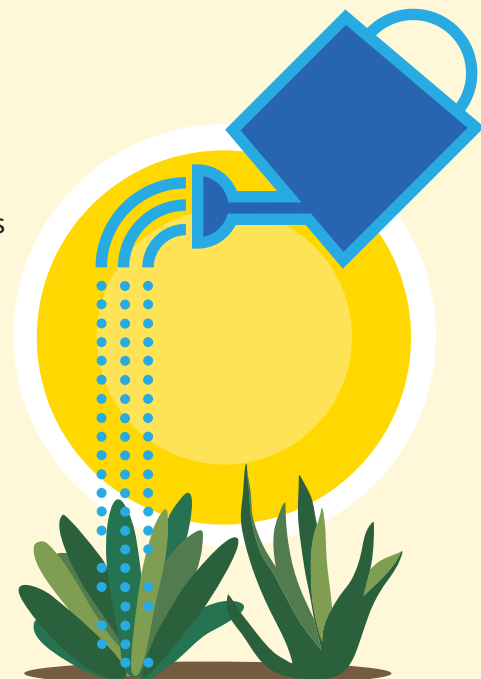
*Signs of underwatering your plants:*

- ▶ Older leaves turn yellow or brown
- ▶ Leaves are dull, wilted, or dropping
- ▶ Leaves curl
- ▶ Stems or branches die back



### SIGNS OF UNDERWATERING YOUR TURF:

- ▶ Bermuda turns blue gray
- ▶ Grass doesn't spring back after being stepped on
- ▶ It's difficult to push a screw driver into the soil



WATER



**Liberty  
Utilities**



**Like Us! Follow Us!**

**Facebook:**

**Liberty Utilities  
Arizona**

**Twitter:**

**@LibertyUtil\_AZ**

**Customer Service:**

**1-844-367-2030**

**www.libertyutilities.com**

**Liberty Utilities**

**1225 W. Frontage Road**

**Rio Rico, AZ 85648**

# A GUIDE TO READING YOUR LIBERTY UTILITIES BILL

- 1 Liberty Utilities Information:** Local customer service office address, website information, customer service center phone numbers and hours of operation.
- 2 Customer Information:** Customer name and mailing address
- 3 Account Information:** Account number, bill date, due date and service address.
- 4 Customer Number:** The digits after the dash of your account number is your customer number. This number is needed when creating an online profile through "My Account" for online billing and payment access.
- 5 Special Message:** Account updates and/or other important information.
- 6 Usage Breakdown:** A breakdown of the water usage charge for the current billing period. Residential sewer is a fixed rate. Some commercial sewer rates are based on water usage and will be reflected here.
- 7 Account Activity:** A breakdown of the cost related to providing safe water and reliable service. The charges include several components, including:

### Monthly Minimum Charges:

Service address fixed charges for water and/or sewer.

### Consumption Charge:

This is a charge for usage during the bill period.

### Other Fees & Credits:

Surcharges, surcredits and local, state and regulatory charges.

The image shows a Liberty Utilities bill with several sections highlighted by numbered callouts:

- 1:** Liberty Utilities logo and contact information (1225 W. Indian School Rd., 1225 W. Frontage Road, Rio Rico, AZ 85648).
- 2:** Customer information (JIMIE DOE, 1234 HYDRATE LN, GOODYEAR, AZ 85395-5878).
- 3:** Account information (Account Number: 89705426112345, Community Code: 1234, Statement #: 211841, Bill Date: 09/25/2018, Due Date: 10/15/2018, Service Address: 1234 HYDRATE LN).
- 4:** A note: "Any previous balances are due immediately."
- 5:** SPECIAL MESSAGE section.
- 6:** SERVICE TYPE table with columns for SERVICE TYPE, SERVICE DATES, METER NUMBER, CURRENT READ, PREVIOUS READ, UNITS, and CHARGE.
- 7:** ACCOUNT ACTIVITY table with columns for ACCOUNT ACTIVITY and CHARGE.